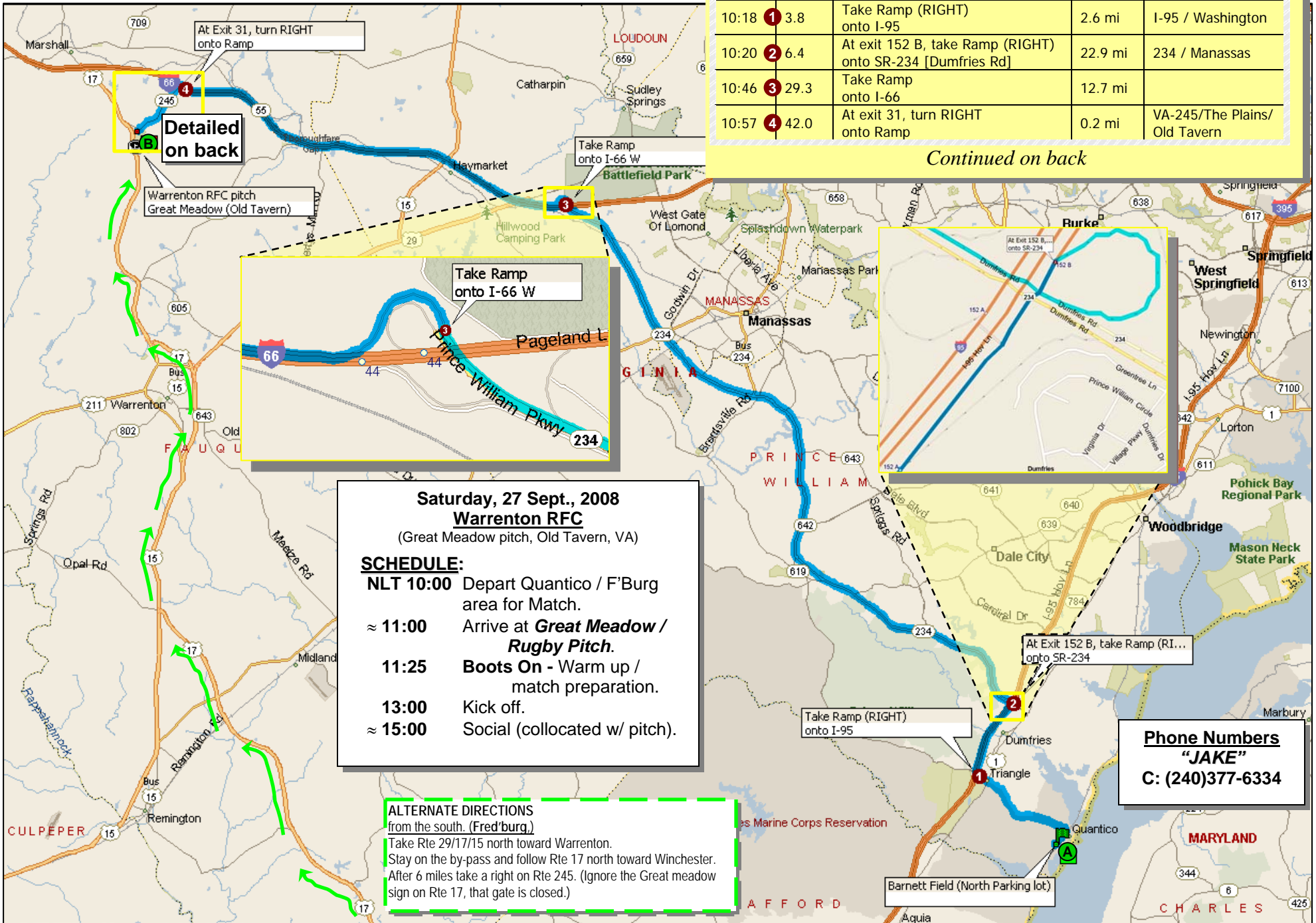


FROM MCB QUANTICO

Summary: 44.2 miles (49 minutes)

Time	Mile	Instruction	For	Toward
10:10	0.0	Depart Barnett Field (North Parking lot)	3.8 mi	
10:18	3.8	Take Ramp (RIGHT) onto I-95	2.6 mi	I-95 / Washington
10:20	6.4	At exit 152 B, take Ramp (RIGHT) onto SR-234 [Dumfries Rd]	22.9 mi	234 / Manassas
10:46	29.3	Take Ramp onto I-66	12.7 mi	
10:57	42.0	At exit 31, turn RIGHT onto Ramp	0.2 mi	VA-245/The Plains/ Old Tavern

Continued on back



Saturday, 27 Sept., 2008
Warrenton RFC
 (Great Meadow pitch, Old Tavern, VA)

SCHEDULE:

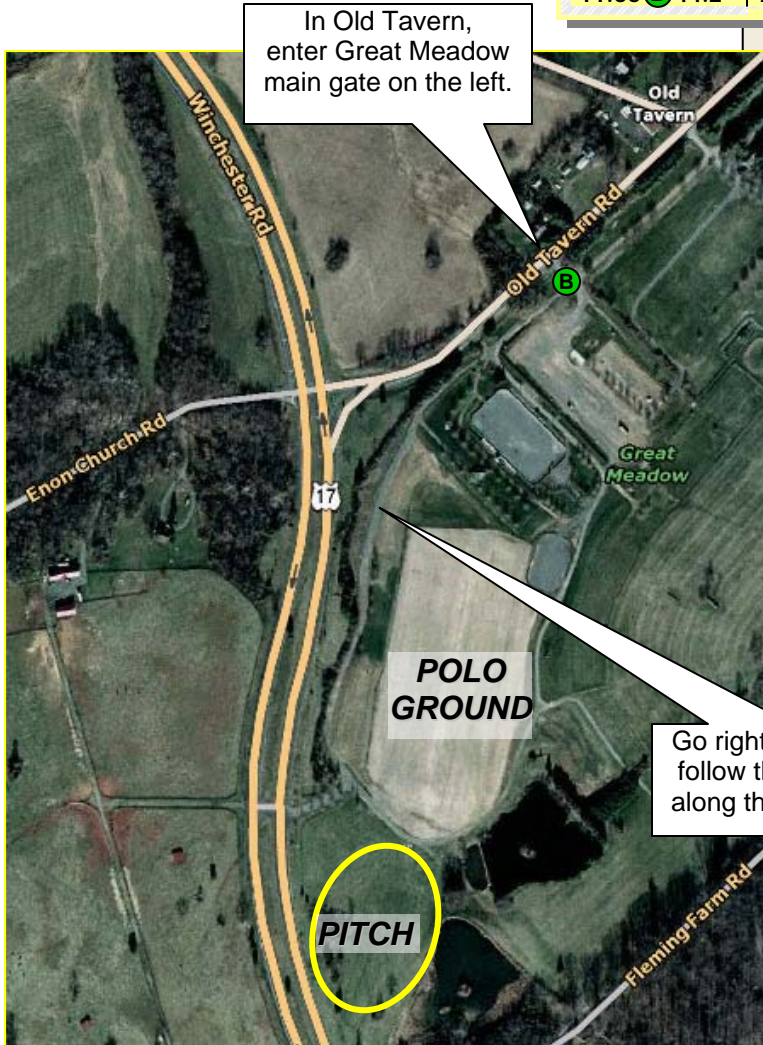
- NLT 10:00** Depart Quantico / F'Burg area for Match.
- ≈ 11:00** Arrive at **Great Meadow / Rugby Pitch.**
- 11:25** **Boots On** - Warm up / match preparation.
- 13:00** Kick off.
- ≈ 15:00** Social (collocated w/ pitch).

ALTERNATE DIRECTIONS
 from the south. (Fred'burg.)
 Take Rte 29/17/15 north toward Warrenton.
 Stay on the by-pass and follow Rte 17 north toward Winchester.
 After 6 miles take a right on Rte 245. (Ignore the Great meadow sign on Rte 17, that gate is closed.)

Phone Numbers
"JAKE"
C: (240)377-6334

Continued from front

Time	Mile	Instruction	For	Toward
10:57	4 42.0	At exit 31, turn RIGHT onto Ramp	0.2 mi	VA-245/The Plains/Old Tavern
10:57	5 42.2	Turn LEFT (South-West) onto SR-245 [Old Tavern Rd]	2.0 mi	
11:00	6 44.2	Arrive Old Tavern – Great Meadow pitch		



Go right immediately and follow the "Rugby" signs along the perimeter road.

